

The "BEELINE" LONG ISLAND BEEKEEPERS CLUB, INC.

Keeping Bees on Long Island Since 1949



March 2021

Volume 30: Edition 3



Executive Board

President: Donal Peterson, 631-827-1810
Vice President: John Most, 631-361-3413
Treasurer: Joan Mahoney, 631-667-5339
Secretary: Marianne Sangesland, 631-680-5895
Membership Secretary: Conni Still, 631-472-1760
Education Director: Grace Mehl, 631-724-5053
Outreach Director: Rick Cannone, 631-445-6266
Programs Director: Moira Alexander, 631-265-8249
Immediate Past President/Director: Steve Chen: 646-625-9910
George Schramm, 631-580-4572

Committees

Hospitality: Nancy Hall and Volunteers on rotating basis

BEELINE Editor: Conni Still, 631-472-1760

Webmaster: Nick Hoefly,

Librarian: Tom Whelan

Club Photographer Phyllis Stein

Visit the club web site at:

www.LongIslandBeekeepers.Org

*Next Meeting: **March 28, 2021**
2 PM ZOOM: The
Zoom link will be mailed
to current members.*

***Bob Binnie-Colony Growth and**
Swarm Impulse*

***Grace Mehl- Spring Buildup and**
Managment*

*Board Meeting: April 13, 2021 Zoom 6:30 JJC
7 PM board*

MASTER BEEKEEPERS LIST

Moira Alexander, Smithtown.....631-265-8249
Peter Bizzoso, Manorville631-874-4750
Rich Blohm, Huntington631-271-7812
Steve Chen*, Holbrook.....646-625-9910
Carl Flatow, Oceanside.....516-510-6227
Walter Goldschmidts, Lloyd Harbor.301-613-0001
Nick Hoefly, Astoria.....352.875.5642.
Chris Kelly, Mattituck.....631-275-5786
Deborah Klughers, East Hampto.....631-377-1943
Ray Lackey

Joan Mahoney,N.Babylon.....631-667-5339
Grace Mehl,Smithtown.....631-724-5053
Fred Munzer, Dix Hills631-243-3512

Marianne Sangesland,Smithtown.....631-680-5895
Miguel Valentin, Ronkonkoma631-588-6102
Wayne Vitale, Setaulket.....631-675-0302

Laurie Volel-Wilkowski.....516-643-6011
Neal Wechsler,Lindenhurst.....631-957-7136

***EAS and Cornell Master Beekeepers Program**

Master Beekeepers are certified beekeepers who have a detailed knowledge of honey bee biology, expertise in the proper practices of beekeeping, and can present this information to the beekeeping and non-beekeeping public in a detailed, accurate, clear and authoritative manner.

Master Beekeepers provide education and assistance to beginning beekeepers and serve in other capacities in the community as experts in beekeeping. The Master Beekeeper program was developed by Dr. Roger A. Morse at Cornell University. The program has been expanded by the Eastern Apicultural Society of North America to other areas.

You can learn more about the Master Beekeeper Program by visiting the Eastern Apicultural Society

website: <http://www.easternapiculture.org/master-beekeepers/certification.html>



LIBC Board

=

From the Editor's Desk

Conni Still



We had another great zoom meeting, lots of members on computer and lots on line by phone so all we saw were phone icons and no faces. We have all been comparing notes on how many bees are flying and how many robins are on our lawns. Spring has Sprung and now is the time to start reading every word written by our Master Beekeepers and Educators! Get ready, now is the busy time to prepare the hives, and wait for the bees to arrive.

Congratulations and thanks to our new librarian Tom Whelan.

STAY SAFE and WASH YOUR HANDS and WEAR YOUR MASKS!

Annual dues are \$35.. PLEASE send a check payable to LIBC to Conni Still at 82 Stephen Road, Bayport, NY 11705, go to the club website Longislandbeekeepers.org.

Any member who does not pay their dues will not receive future newsletters nor have free advertising in future newsletters, Also please update your copy for your ads. Send your information to Moira Alexander at ramoi@aol.com and put LIBC classified ads in the subject line.

LIBC Meeting Schedule for 2021

NOTE: The meetings are the fourth Sunday of the month at announced location.

March 28th and we will start with a club meeting at 2pm. Please check the website to ensure your email address is correct in your profile so you get the link.

While you are at the website, you can also pay your dues for 2021!

You will receive the zoom link information at 12:00 the day of the meeting so we can control who joins our monthly meeting.

We will have 2 presentations following the short monthly meeting which will help you as you install bees and bring your existing colonies into the spring flow.

Bob Binnie - Owner of the commercial beekeeping company Blue Ridge Honey Company which is a family owned business that has existed since 1981. The operation is located in the Blue Ridge Mountains of Northeast Georgia and his bee yards are spread across the states of Georgia and North Carolina. His commercial beekeeping operation covers and serves farms in 10 states. He is an active member and has served as the president of 3 clubs in the states of Georgia and North Carolina.

His topic for this meeting will be.... *Colony Growth and the Swarming Impulse*

Grace Mehl - Our Education Director will discuss with you.... *Spring Buildup and Management*

Hope you will join us so we can stay connected as club members and beekeepers here on Long Island

□ **Three club... 2 frame extractors are available for \$10 rental for honey extraction.- call Moira or Rick-**

Throughout 2020, artist Charis J Carmichael Braun has been "sheltering in place" in her studio, steadily working on her "Beekeeper Portrait Project." Each participant in this project is a member of

the Long Island Beekeepers Club.

With over 700 beekeepers on Long Island, "bee-people" can be found in every ethnicity, economic background, and educational focus. Charis has photographed, interviewed, and is now interpreting in paint each of the participants in their environments to illustrate the relationship between these people and pollinators.

The painted portraits will debut April 30-May 2, 2021 (reception TBA) at the Museum of Contemporary Arts Long Island, courtesy of the Patchogue Arts Council.

Here are a few sneak-peeks: (images at this link: <https://photos.app.goo.gl/WSGk6VCboYAp3ca56>)

For more information about the Beekeeper Portrait Project, see Charis' website: <https://www.charisjcarmichaelbraun.com/artwork#/itbeginswithabee/>, and follow the project on Instagram: <https://www.instagram.com/explore/tags/itbeginswithabee/>

Long Island Beekeepers Teaching Apiary

We are happy to announce the start of the Club teaching apiary this spring.

1. The purpose of this venture is to provide hands on teaching capability to further your understanding of your bees, the colony development, different equipment configurations, and your management of

colony health.

2. The teaching apiary will be located on the property of the Sisters of St. Joseph's near the building named "Honey House". The address is 1725 Brentwood Rd, Brentwood,

NY.

3. The sessions will normally be on Saturday, with Sunday as a rain date. ***However, the very first session will be on Sunday, April 4th as the packages arrive sometime on April 3rd.*** Time will be 10:30 to 12:00.

4. Protocol for attendees is a Mask and Veil as a minimum. Other PPE as desired, a notebook and pen are suggestions. Class size will be limited to 12 with a waiting list, if required.

5. Signing up for the sessions will be by emailing the instructor for that session. The schedule will be posted on the website for the coming month. We ask all students to share the opportunity and not attempt to sign up for each session. If you have previously signed up and attended a session, you can send a request to the instructor to be placed on the waiting list in hopes that the class will not be full. Instructors will let you know if you can attend as a repeat if there is room in the session a few days before the class.

6. Directions: Enter at the 1725 Brentwood Rd entrance (across from 5th Ave.) and pass the guard shack going straight, then bear to the right in front of the Maria Regina Rehab Center and then go right again at the small sign that says "garden" and go through the parking lot to the end and park there. Walk to the Honey House where the group will gather and meet your instructor.

This is a new program for the club and we expect some growing pains and that the system will evolve over time as we all learn.

The schedule for April is:

April 4th (*Easter Sunday*) at 10:30--Grace Mehl/John Most, contact at education@Longislandbeekeepers.org to sign up

April 17th at 10:30--Marianne Sangesland, contact at Secretary@longislandbeekeepers.org to sign up.

Hey Beeks!

The weather has been warm and the bees flying out and hopefully finding the first pollen from Crocus, Witchazel, and Skunk Cabbage, if any of these are near by. You may be wondering, should I remove the wraps from my hives, feed, reverse boxes, inspect?

So, lets think about where we are in the season right now. I am certainly ready for it to be Spring. But, in truth, there could be a cold snap still before Spring settles in for good. It is not unheard of to have snow in March. We have to be careful to not get carried away with a warm day or two. I am not taking my wraps off my hives for a couple more weeks I am thinking. Maybe the end of March or the first week of April. It will depend on the weather forecasts. I can't give you a date,

but, packages are arriving first week of April, so, I am thinking they will be off by then.

I am feeding most of my hives right now. I had bees up at the top, so I went ahead and put winter patties on them. There is a picture below of one of my hives with winter patties on it. Winter food is solid food. Winter patties, fondant, candy boards, sugar are what you feed in winter. Now is a good time to add a small piece of pollen patty too, to help the bees build up, and tide them over on cold days when they can't get out and forage. This may not be necessary if you had a well established hive with lots of pollen in it last fall, but, it can't hurt. Do be aware that Small Hive Beetles (SHB) love to breed in pollen patties, however. If there are SHBs in your hive and you put in a great big pollen patty and leave it in for a couple of weeks, you may just make a whole colony of SHBs. I like to put in a small piece and then take it out and replace it in a week with a new piece. By doing this, I take out any SHB eggs and larvae before they can mature enough to crawl out and

pupate in the ground. Make sure you bag and properly dispose of that old pollen patty piece and not just throw it on the ground.

It is too early to feed sugar syrup yet, but, I think in another couple of weeks I will be doing this too! Just have to wait until the night temps are not too cold. Of course when the packages come in, all of those will be fed syrup as soon as they are installed. They need that to build the wax combs.

These few nice days provide an opportunity to take a peek down into your hives and see where the cluster is and how big the population is. You can take a frame or two out of the top box and peek down into the second box down without removing wraps. You don't want to do a full inspection yet. It is too disruptive and you don't want to chill the brood or risk damaging the queen. Replacing her now is near impossible. So, in most cases, it is better to wait before looking as long as you can see a nice cluster of bees from the top. In a couple of weeks you will be able to do all of this. I had a dead out in my apiary and I

hadn't broken it down yet. Today I saw bees coming and going from it. It hadn't come back to life, it was being robbed out! That would be a problem because I want to put a package into equipment on that hive stand in a few weeks. So, I got busy taking it apart and storing it away. If I had let the bees rob that hive, not only will the new package not have those resources, but, they will immediately be under attack by robbers who are used to robbing at that location. So, it was important to get that hive stored away ASAP. Everyone wants to help their bees build up so they can take advantage of the nectar flow when it starts in earnest in May, and feeding them a little now is one good way to stimulate that growth. Making sure they have room to grow is also a way to stimulate build up. It is still a little too early to reverse boxes yet, though. If you do that now, you could disrupt the colony by moving the brood down to the cold bottom of the hive. Better to be patient. You definitely don't want to split the brood and lose some because it got chilled. Some

beekeepers never reverse boxes and their bees build up just fine. It is a choice. But, doing it wrong or too early can be more damage than not doing it at all.

In summary, continue supporting your bees with winter food until it is warm enough in a few weeks to feed sugar syrup, and get ready for the season change coming up fast! Get your equipment ready if it isn't already. Check supers and scrape frames and boxes if it isn't done yet. Paint what needs painting and be prepared. Just don't jump the gun and do more harm than good! Enjoy watching those bees bring in the first pollen and pay attention to the buds on the trees. Spring is just around the corner! --Grace



A few weeks ago the lead PI of the pollen analysis lab here at Texas A&M University, Dr. Vaughn Bryant, passed away. I recently found out that the lab is no longer accepting any new samples, and are focusing on completing the samples they have already committed to processing. I know several of you have encouraged your beekeepers to send samples to this lab over the years, and it's sad to think that we no longer have Dr. Bryant's knowledge and expertise, nor the valuable resource his lab provided. Please feel free to pass this message along to anyone you think may be notified.

I have used Dr. Bryant's lab for several years and he will be greatly missed. May he Rest In Peace.

Dear Friends of EAS

As you may have heard, The EAS Conference that was scheduled to be held at Amherst University in Massachusetts in July, had to be cancelled. This venue is not booking summer events due to the pandemic.

EAS has located an alternative site in Shepherdsville, Kentucky for a three-day conference to be held on August 11 – 13th at the Paroquet Springs Conference Centre, Shepherdsville, KY with a conference theme of "*Bee Connected*". Shepherdsville, KY is approximately 20 minutes from two airports in Louisville, KY. The chosen conference site can accommodate 1000 participants, but we are limiting the event to 300 participants in order to maintain social distancing in the main presentation hall. At this time no EAS social events are planned, other than an outdoor barbecue, awards, and auction on the evening of Friday, August 13th. There are many activities, restaurants and

hotels in the area. The upcoming Journal will have more details.

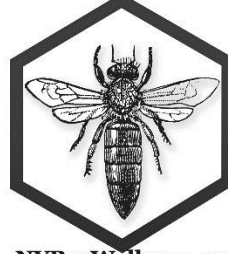
Registration will be open for all by early May. There will be no walk-in registrations. Please keep in mind that this is a three day event for a smaller group of attendees. Masks indoors will be mandatory. If at all possible please get a vaccine before coming. We want to hold a safe, educational, fun event. There will be Master Beekeeping Testing, an Apiary track and 5 presentations scheduled for each day.

Please make sure you membership is current so that there are no delays in registering. Watch your email for notification of when registration opens.

Stay well and I hope to see in Kentucky !

Eloise "Lou" Naylor Chairman

NY Bee Wellness Inc



NYBeeWellness.org

Topic:

Succeeding in Beekeeping in New York, Mike Johnston April 8 2021
-a NY Bee Wellness webinar

Description:

In this webinar, Mike will explain why his bee operation has prospered in New York. He will attempt to advise other New York beekeepers on how they can also do well in beekeeping. Raising your own bees rather than purchasing them year after year will be emphasized. Making splits, raising natural or grafted queens, walkaway splits and producing nucs will be covered. The timing of manipulations is important. We will also look at New York State locations from a soils perspective, where are the better locations, and what honey is produced in different areas.

This is a listen only webinar;

questions can be submitted during the session.

You must register at least 1 hour before the webinar begins!

Register in advance for this webinar:

<https://us02web.zoom.us/j/84411111111>

After registering, you will receive a confirmation email containing information about joining the webinar.

Mike Johnston has been keeping bees for over 40 years. He has worked for 4 commercial beekeepers. Between 1979 and 1988, he spent ten seasons working for 2 large queen, package bee, and nuc producers in the Central Valley of California. After moving back to New York, he worked 23 years for Madison County Soil and Water Conservation District, 11 years as District Manager. Mike runs a 350 colony operation. Most of the bees are kept in two colony hives. You can learn more at: johnstonshoneybeefarm.com.

Time

Apr 8, 2021 07:00 PM in Eastern Time (US and Canada)

NY Bee Wellness keeps this webinar **FREE**, **DONATIONS** are accepted! 🐝

NY Bee Wellness, Inc- a Grassroots, Educational 501c3 not for profit Organization

NYBeeWellness.org

Hey Beeks!

March weather is unpredictable. Sometimes it is too cold or rainy for the bees to fly, and then the next day they are out every where! And, maybe you miss this, as you are at work all day and by the time you get home, they are back in the hive. You can tell though, by looking at the landing board, that

they were cleaning house. There will be hive litter there, and maybe even some paper from the winter patties you fed them as insurance. I even had one hive, where they jammed up the entrance trying to remove big sheets of this paper through the smallest hole of the entrance reducer! Glad I looked.

There isn't a lot for the bees to find in some areas, but, they are bringing in pollen here. I think it is from Skunk Cabbage, Crocus, and maybe Maples, which are just starting to pop. Every area is a little different in what is available. But, the bees have one other big need right now, and that is WATER. They need water to thin down the honey they still have left and also to thin down the solid winter food you have given them so far. They are feeding brood and the population is growing. The water that was

recycled all winter from bees exhaling is not enough for the larger population growing now. Bees need water to make that liquidy brood food!

My bees are all over the water source I have out for them. It is *really* important to put out a water source right now. Once the bees learn a water source, it is hard to change where they go. So, if they learn to find water at your neighbor's pool cover or the little puddle in their fountain, they will go there ALL SEASON. Now is the time to get that water source out to make sure that doesn't happen.

A water source can be any bowl, dish, tray, etcetera, with something in the water like rocks, twine, straw or twigs so the bees don't drown. A shallow slanting edge is good too, sort of like a beach where they can line up and drink. I use a big plant pot base

with gravel in it that sits under a leaky outdoor faucet. I top it up each morning if the drip isn't enough to keep it wet. The bees don't mind if leaves get in it. They learn a smell of that water and go to it all the time. It was mobbed this morning.

I am hoping that in the next couple of weeks, the night time temperature is warm enough that I can give them some 1:1 sugar syrup. If the night time temps are too cold, the syrup gets so cold the bees can't use it, even in the morning, as it doesn't warm up fast enough. It has to be at least 40 degrees or better yet, 45 F to feed syrup. Depending on your feeder, the syrup can also "burp" on them if it warms up during the day, and kill bees with the liquid running down inside the hive. This only happens if there is a big change of temperature from night to day. But,

something to be aware of if using jars, buckets or the like.

While I have your attention, I also want to talk about something else that has been all over the web recently, and that is Oxalic Acid. You may have heard that On February 23, 2021, the FDA finalized a ruling that establishes an exemption from the requirement of a tolerance for residues of oxalic acid in honey and honeycomb. But, what does that mean? Well, it doesn't mean that the label for oxalic acid used in honey bee colonies has changed, for one. The label is the law. Until that changes, the way we use oxalic acid does not change. There has been a lot of "dis-information" published on line. If you use oxalic acid, read the label and use it appropriately. You can find more on this subject by going to: [https://beeinformed.org/2021/](https://beeinformed.org/2021/03/10/what-does-the-new-ruling-on-oxalic-acid-in-honey-mean/)

[03/10/what-does-the-new-ruling-on-oxalic-acid-in-honey-mean/](https://beeinformed.org/2021/03/10/what-does-the-new-ruling-on-oxalic-acid-in-honey-mean/)

I am hoping to see you all at the Zoom Meeting on the 28.

Hey Beeks!

I hope your bees are flying and bringing in lots of pollen! I am putting syrup on my bees this week and taking off the winter patties. Once the syrup goes on, it is important to take off any shims as the bees will be stimulated to make comb. Extra space will be filled with burr comb, so mind your bee space.

Moira and I installed packages as a demonstration for the 101 class and her class, yesterday at her home apiary, and they looked FABULOUS! The packages that were planned to come in on April 3rd for the teaching Apiary and JJC among others, are delayed due to rain in California. They are

now expected on April 10th. We have rescheduled the package installation demonstration for the Teaching Apiary for 1030 Sunday morning, April 11th, and will confirm this once the package arrival date is confirmed. Those who were signed up for the original date were given the opportunity to attend one of the demos yesterday. If you couldn't make it, and/or want to attend on the 11th, you can contact me at education@longislandbeekeepers.org to sign up.

There are two conferences coming up and they are offered as free Webinars. The first is *THIS WEDNESDAY* at 7 pm MST, which is two hours earlier than EST. So, the

conference is at 5 PM. It is offered by the Western Apicultural Society and sponsored by Oliveras Honey Bees, so it is FREE. There are three speakers. See the link to get more info. You can register at the same link and you must register in advance: <https://www.westernapiculturalsociety.org/events-1>

The next one is a conference offered by NY Beewellness and is April 8th at 7pm EST. The speaker is Mike Johnston. Raising your own bees rather than purchasing them year after year will be emphasized. Making splits, raising natural or grafted queens, walkaway splits and producing nucs will be

covered. The link to register and get more info is: <https://us02web.zoom.us/j/84451202020>

Our March Zoom meeting is this Sunday, March 28th at 2pm. The link will be sent out that morning. We will have a short business meeting and finalize elections and then have our speakers. Make sure your email is correct on the website, and you can pay your dues while you are there, if you haven't already. Hope to see you there!

In April, we are planning to get together in person again outside at the Peconic Herb Farm. More information will be provided on that as we get closer. Stay well and see you soon! --Grace

CLASSIFIED ADS

Ads are complimentary for members of LIBC in
good standing

CLASSIFIED ADS DO NOT CONSTITUTE
ENDORSEMENT BY THE CLUB.

THEY ARE PRINTED AND SHARED AS
INFORMATION ONLY.

BEEKEEPING EDUCATION

EAS Master Beekeeper Rich Blohm 102 class,
Monthly Zoom Format, Huntington, September Start,
631 271 7812 or Beebiz44@gmail.com

EAS Master Beekeeper Moira Alexander 101 Class,
11 - 2hr sessions, Brentwood, September 2nd Start,
631 664 6810 or Ramoi@aol.com

EAS Master Beekeeper Debbie Klughers 101 Class,
Zoom Format, East Hampton, November Start, 631
377 1943 or debklughers@optonline.net

Package Bees for Sale

Wally Blohm-(Queens County) 718- 380-0829
bee venom@verizon.net
Steve Chen - 646-625-9910
stevechenbees@gmail.com
Deb Klughers- 631-377-1943
debbie@bonacbees.com
Wayne Vitale- 516-680-3020
wayne@spycoastbeefarm.com

Nucleus Hives for Sale

(Maybe in deep or medium frames)
Updated 02/10/20
Rich Blohm - 631-271-7812 bee biz44@gmail.com
Joe Magnoli- 516-724-4468
earliestspringnucs@gmail.com
Brendan O'Regan 917-689-9854
authentichoneyofnewyork@gmail.com
Donal Peterson - 631-827-1810
3BeesApiary@gmail.com
Tom Tyrell - info@TomsHoneyAndBees.com
Wayne Vitale-516-680-3020
wayne@spycoastbeefarm.com
Dale Williams - 631-475-8315
<https://southbayapiaries.com>

Queens for Sale

Updated 02/10/20

Rich Blohm - 631-271-7812 Beebiz44@gmail.com
Steve Chen - 646-625-9910
stevechenbees@gmail.com

Joe Magnoli- 516-724-4468
earliestspringnucs@gmail.com

Donal Peterson - 631-827-1810
3BeesApiary@gmail.com

Tom Tyrell - info@TomsHoneyAndBees.com

Plants for Sale

Updated 02/10/20

Sayville-Liz Marcellus
631-439-1487 ECMflowers@yahoo.com

Organic bee-loved trees, shrubs, & perennials

Patchogue – David Tifford 631-475-7118
jd tifford@optonline.net Organic bee friendly
annuals and perennials.

Insurance/Beekeeping Liability

Updated 02/10/20

Farm Family – Vincent C Daley 631-277-7770
State Farm – Jim VonEiff 718-899-8985

Local Honey for Sale

Updated 02/10/20

Bronx

Brendan O'Regan 917-689-9854
authentichoneyofnewyork@gmail.com

Queens

Queens - Walter Blohm, 718-380-0829 –
bee venom@verizon.net

NYC

Nick Hoefly- 352-875-5642
nick@astorapiaries.com

Suffolk/Nassau

Amityville - Rich Meyer - 917-681-1706
rjmeyer1423@aol.com
Bay Shore - Donal Peterson - 631-827-1810
3BeesApiary@gmail.com
Brookhaven - Dale Williams - 631-475-8315
<https://southbayapiaries.com>

Calverton/Muttontown- Joe Magnoli- 516-724-4468 earliestspringnucs@gmail.com
Huntington - Rich Blohm - 631-271-7812 beebiz44@gmail.com [Maxant manual extractor and an assorted amount of new and used equipment](#)

Laurel- Tom Tyrell - info@TomsHoneyAndBees.com
Nassau - Carl Flatlow - 516-510-6227

carlthebeekeeper@icloud.com
East Hampton-Deb Klughers-631-377-1943 www.BonacBees.com
Rocky Point - John Hardecker - 631-744-9531 hardecker@aol.com
Smithtown - Moira Alexander - 631-265-8249 ramoi@aol.com
Southampton-Michele Passarella-516-567-1181
micheletpassarella@gmail.com
Stony Brook, Setauket, Old Field - Bill O'Hern - 631-938-6233 OHoneyBeeFarm@gmail.com
Setauket - Wayne Vitale 516-680-3020 wayne@spycoastbeefarm.com
Wading River- Roy Baillard- 631-375-0962 rbaillard@optonline.net
West Hills – Walter Scott – 631-549-2546 wscott380@gmail.com

Wedding Favors

Updated 2/10/20
Roy Baillard- 631-375-0962 rbaillard@optonline.net
Carl Flatow- 516-510-6227 carlthebeekeeper@icloud.com
Nick Hoefly- 352-875-5642 nick@astorapiaries.com
Joe Magnoli- 516-724-4468 earliestspringnucs@gmail.com
Bill O'Hern 631-938-6233 OHoneyBeeFarm@gmail.com
Donal Peterson 631-827-1810 – 3beesapiary@gmail.com

Hive and Wax Products

Updated 02/10/20
Bee themed gifts/jewelry - Lorraine Leacock at

the Beetique 516-459-0140 Lorraine@bluepointbee.com
Bee themed gifts/jewelry/wax- Nick Hoefly- 352-875-5642 nick@astorapiaries.com
Wax- Fred Munzer – 631-243-3512 – munzer39@verizon.net
Candles-Bill O'Hern 631-938-6233 OHoneyBeeFarm@gmail.com

Wax- Donal Peterson 631-827-1810 – 3beesapiary@gmail.com
Wax/Pollen/Propolis – Tom Tyrell – info@tomshoneyandbees.com
Various Hive Products-Deb Klughers-631-377-1943 www.BonacBees.com
Wax/Pollen - Dale Williams 631-475-8315 <https://southbayapiaries.com>
Lip Balm, Creams Skin Care
Updated 02/10/20
Lip balms, cream skin care-Nick Hoefly- 352-875-5642 nick@astorapiaries.com
Lip balm-Bill O'Hern 631-938-6233 OHoneyBeeFarm@gmail.com
Lip balm/body care products-Wayne Vitale- 516-680-3020 wayne@spycoastbeefarm.com
Equipment
Updated 03/16/2019
Ernest Herrington – dmherri@gmail.com Custom Beekeeping wooden ware
Joe Magnoli- 516-724-4468 earliestspringnucs@gmail.com Wax dipped boxes
The Mohawk Valley Trading Company: 315-519-2640, info@tenonanatche.com
Fort Schuyler Trading Company: info@unundadages.com
Fred Munzer – 631-243-3512 – munzer39@verizon.net Glassware, frame spacers
Donal Peterson 631-827-1810 – 3beesapiary@gmail.com glass, woodenware, frames, smokers
Cliff Struhl <http://info@beesmartdesigns.com>
Hive stands, covers, robbing screens, Bottom Boards, Frame grippers, feeders
Deb Klughers Bee Smart Design products and other items 631-377-1943 www.BonacBees.com
Dale Williams – 631-475-8315- <https://southbayapiaries.com> Wooden ware and

foundation

Patrick Gannon-718-757-1699

beekanzi@gmail.com "BeeSmart plastic hive stand for 8 frame hive

Used in very good condition

\$50.00 I will deliver

Wally Blohm-718-380-0829

Beevenom1@gmail.com

Miguel Valentin*: 516-313-6967, 631-588-6102
Chris Kepert, Middle Island 631-291-8591 2631-291-8537

Western Suffolk, Justin Colon-631-3334-3888,
justincolon@gmail.com

Justin Colon- Swarm removals Nassau and Western Suffolk

Maxant 16 Gallon Bottling Tank \$800. Pick up in Queens

Honey Tank 660 lb, Honey Tank 300 lb, Observation Hive Miguel Valentin 516-313-6967

Swarms/Bee Removals

NYC

Nick Hoefly- 352-875-5642 nick@astorapiaries.com

Queens

Hillcrest: Walter Blohm**, 718-380-0829, Licensed & Insured beevenom@verizon.net

Nassau County

Western Nassau North Shore: Richard Blohm**, 631-271-7812 beebiz44@gmail.com

Oceanside, South Shore Nassau, Garden City: Carl Flatlow*, 516-510-6227

carlthebeekeeper@icloud.com

Merrick to Montauk-Joe Magnoli*-516-724-4468

earliestspringnuucs@gmail.com

Al Gruenthaler*516-433-7035 alsbees@gmail.com

Justin Colon, 631-334-3888, justincolon@gmail.com

Suffolk County

Amityville: Richard Meyer*, 917-681-1706,

rjmeyer1423@aol.com

Brookhaven: Dale Williams**, 631-475-8315,

southbayapiaries.com

Dix Hills/Deer Park: Fred Munzer, 631-243-3512

munzer39@verizon.net

All Suffolk County: Donal Peterson**, 631-827-1810

3beesapiary@gmail.com

Eastern Suffolk: Deborah Klughers-Bonac*, 631-

377-1943 Debbie@bonacbees.com

Huntington and Western Suffolk North Shore:

Richard Blohm**, 631-271-7812

beebiz44@gmail.com

North Shore, Western Suffolk: Andrew Hulley**,

631-561-9021 ajhulley1@gmail.com

All Suffolk County: Donal Peterson**, 631-827-1810

3beesapiary@gmail.com

All Suffolk County: John Hardecker, 516-383-1583