

The "BEELINE" LONG ISLAND BEEKEEPERS CLUB, INC.

Keeping Bees on Long Island Since 1949



BEELINE

Editor: Conni Still, 631-472-1760

Webmaster: Nick Hoefly,

Librarian: Lorraine Leacock

Club Photographer: Phyllis Stein

Visit the club web site at:

www.LongIslandBeekeepers.Org

- **President:** John Most, 631-361-3413
- **Vice President:** Walter Scott 516-428-1063
- **Treasurer:** Suzanne Cahill 917-714-3364
- **Secretary:** Marianne Sangesland, 631-680-5895*
- **Membership Secretary:** Conni Still, 631-472-1760
- **Education Director:** Grace Mehl, 631-724-5053
- **Outreach Director:** Rick Cannone, 631-445-6266
- **Programs Director:** Moira Alexander, 631-265-8249
- **Immediate Past President/Director:** Steve Chen 646-625-9910



Next Meeting:

Sunday, September 22, 2024

1PM-3PM

Sisters of St. Joseph, Brentwood

MASTER BEEKEEPERS LIST

Moira Alexander, Smithtown.....631-265-8249
Peter Bizzoso, Manorville.....631-874-4750
Rich Blohm, Huntington.....631-271-7812
Steve Chen*, Holbrook.....646-625-9910
Carl Flatow, Oceanside.....516-510-6227
Walter Goldschmidts, Lloyd Harbor.301-613-0001
Nick Hoefly, Astoria.....352.875.5642
Chris Kelly, Mattituck.....631-275-5786
Deborah Klughers, East Hampton...631-377-1943
Ray Lackey, Caledonia, Michigan
Katherine Luberto..... 631-965-7327
Joan Mahoney, N.Babylon.....631-667-5339
Grace Mehl, Smithtown.....631-724-5053
Fred Munzer, Dix Hills.....631-243-3512
Marianne Sangesland, Smithtown....631-680-5895
Walter Scott, West Hills Huntington..516-428-1063
Miguel Valentin, Ronkonkoma.....631-588-6102
Wayne Vitale, Setauket.....631-675-0302
Laurie Volel-Wilkowski.....516-643-6011
Neal Wechsler, Lindenhurst.....631-957-7136

Master Beekeepers are certified beekeepers who have a detailed knowledge of honeybee biology, expertise in the proper practices of beekeeping, and can present this information to the beekeeping and non-beekeeping public in a detailed, accurate, clear and authoritative manner.

Master Beekeepers provide education and assistance to beginning beekeepers and serve in other capacities in the community as experts in beekeeping. The Master Beekeeper program was developed by Dr. Roger A. Morse at Cornell University. The program has been expanded by the Eastern Apicultural Society of North America to other areas.

You can learn more about the Master Beekeeper Program by visiting the Eastern Apicultural Society website: <http://www.easternapiculture.org/master-beekeepers/certification.html>

EXECUTIVE BOARD

President-John Most
516-361-3413
Vice-President-Walter Scott.
516-428-1063
Treasurer-Suzanne Cahill
917-714-3364
Secretary-Marianne Sangesland
631-680-5895
Membership Secretary-Conni Still
631-472-1760
Education Director-Grace Mehl
631-724-5053
Outreach Director-Rick Cannone
631-445-6266
Program Director- Moira Alexander
631-265-8249
Information Technology Director-Nick Hoefly 352-875-5642
Acting Immediate Past President-Steve Chen 646-625-9910

Committees

Hospitality-Kathy Luberto & Volunteers
(rotating basis)
Beeline Editor-Conni Still
631-472-1760
Librarian-Lorraine Leacock
631-459-0140
Club Photographer-Phyllis Stein
Designer-Savitha Pat Sudul
design@longislandbeekeprs.org



From the Editor's Desk

Conni Still

Dear Beekeepers,

Dear Beekeepers, Thanks to Audrey DeLong making my copy of the newsletter mailable and presentable, we hopefully will be able to keep up to date from now on. Don't forget this is Honey Tasting Sunday. Honey must be in a jar, NO LABEL or identifying marks! There are three classes this year, light, medium and dark. I'll never forget the year my honey was selected as best dark, I was so proud of my bees!

Check your account on the website every month to access the newsletter!

Annual dues are \$40. PLEASE send a check payable to LIBC to Conni Still at 82 Stephen Road, Bayport, NY 11705,

or go to the club website Longislandbeekeepers.org.

Any member who does not pay their dues will not receive future newsletters nor have free advertising in future newsletters.

CLASSIFIED ADS

For current Classified Ads see the Club Website

If you've posted an ad in the past now's a good time to update any information! Go to the LIBC website, log in and go to My Account. You will see a Green Button on the right lower side saying "Submit Ad". Click on this and the form will come up for you to fill out. Nick, the Director, will review it and post or contact you for any problems.

- * Ads are complimentary for members of LIBC in good standing.
- * Only members in good standing have the ability to update their classified posting.
- * Send your information to Moira Alexander at ramoi@aol.com and put LIBC classified ads in the Subject Line for any changes!

** Classified advertisements do not constitute endorsement/recommendation by LIBC*

Dear Conni:

I enjoy solving the cryptoquote puzzles in *Newsday*, and in August, three of them were sayings involving honey. I figured they would be interesting to share. Here they are and who said it.

Martin

That which is not good for the bee-hive cannot be good for the bees.

Marcus Aurelius

If you want to gather honey, don't kick over the beehive.

Dale Carnegie

If bees only gathered nectar from perfect flowers, they wouldn't be able to make even a single drop of honey.

Matshona Dhlwayo

LIBRARY UPDATES:

Newly donated books:

Thank you to everyone who donates a book to increase our shared knowledge!

No new books

Library Stats:

2 books loaned to 2 people
2 books renewed by 2 people
8 books returned by 7 people

Library books will be made available during the September meeting.

To request a book in advance please email to librarian@longislandbeekeepers.org in advance of the meeting. Simply provide your name and the book title you would like to borrow and it will be there for you if we have it (one month loan).

OVERDUE: Please bring books that are due and we are still looking for these overdue returns:

Angela Asselta: *Beekeeping for Dummies*
Bob Linekin: *The Backyard Beekeeper*
Bob Linekin: *The Beekeeper's Bible*
Keith Macartney: *Better Beekeeping*
Keith Macartney: *The Practical Beekeeper I*
Cienna Rizza: *The Beekeeper's Handbook*
Margie Rizza: *Homegrown Honey Bees*
Michelle Salz: *Natural Beekeeping*
Michelle Salz: *Simple Smart Beekeeping*



★★★★★ 66

Have you seen the book *Plan Bee*? It went missing after the March meeting. Let's track it down so everyone can enjoy it!





It is with deep sadness that we report the passing of long-time club member Barbara Munzer. Barbara, along with her husband, past President and Master Beekeeper Fred Munzer, was an active participant in the club and for many years. Barbara ran the hospitality table for the club meetings.

Condolences may be sent to the Munzer family at 54 Old Brook Rd, Dix Hills, NY 11746



Upcoming Opportunities:

American Apitherapy Society


4-6 October 2024

See you in Chicago!

Exciting News!

The countdown is on—our Charles Mraz Apitherapy Course Conference (CMACC) is just a few weeks away, and we couldn't be more thrilled! This year, we're turning up the excitement with a stellar lineup of 10 world-renowned speakers, each tackling a topic within our theme: "Emerging Trends in Apitherapy."  

But that's not all—our speaker roster has just expanded to include even more expertise, a Veterinarian! From cutting-edge research to groundbreaking techniques, this conference is set to be a treasure trove of new insights.

 [Discover More: Follow the links in this newsletter to explore our speakers' profiles and meet our incredible vendors.](#)

Haven't registered yet? There's still time! Secure your spot today and be part of the conversation about the future of apitherapy.

Have questions? [Feel free to email us—we're here to help!](#)

We can't wait to see you in Chicago!

UPCOMING EVENTS

This month's speaker is Kevin Inglin and the title of his talk will be "The Frame Game."

**Honey Tasting Contest
This Sunday, 22 September
Bring your jars!**

**Honey Judging Contest
at our
October LIBC meeting.**

LIBC Honey, Wax, and Mead Judging Entry Rules 2024

1. All entrants must be paid-up members in good standing as of September of the current calendar year. Section 6 of the Bylaws states that "only members in good standing and members of their immediate families who are present can enter contests if a member is absent, a member of the family may represent him in case of extenuating circumstances can enter items for them."

2. Only one entry in each class may be made by an individual or family. Duplications will be disqualified.

3. Identifying labels on entries are forbidden.

4. All entries must have been a product of the entrant's apiary and have been produced during the current calendar year.

5. The decision of the judges in all cases will be final.

6. Entries in classes ONE through FIVE (see below) must be in one pound queenline jars.

7. Colors in honey in classes ONE through FIVE will be determined by the official grading committee.

8. Entries in classes SIX, SEVEN, and EIGHT must be in bee-proof cases having both sides made of transparent glass or plastic.

9. Entries in classes TEN, ELEVEN, and TWELVE must not be in a container.

10. Entries in class THIRTEEN shall have been made by the exhibitor by the process of fermentation and shall not have any identifying labels.

Honey, Wax, and Mead Classes

Extracted Honey

Class ONE: One jar of water white honey

Class TWO: One jar of light honey

Class THREE: One jar of light amber honey

Class FOUR: One jar of amber honey

Class FIVE: One jar of dark honey

Comb Honey

Class SIX: One section box of comb honey

Class SEVEN: One package of cut comb 4" square or one circular section of comb honey

Class EIGHT: One shallow, medium, or deep frame of comb honey

Creamed Honey

Class NINE: 16 oz. clear container of creamed honey

Beeswax

Class TEN: Single piece, pure beeswax, weight 1lbs.

Class ELEVEN: Candles, dipped, one pair, pure beeswax

Class TWELVE: Candles, molded, one pair, pure beeswax

Mead

Class THIRTEEN: 16 oz. clear container of mead, made without fruit juice.

LIBC Honey, Cookery and Gadget Entry Rules 2024

1. All entrants must be paid-up members in good standing as of September of the current calendar year. Section 6 of the Bylaws states that “only members in good standing and members of their immediate families who are present can enter contests if a member is absent, a member of the family may represent them in case of extenuating circumstances can enter items for them.”

2. Only one entry in each class may be made by an individual or family.

3. Identifying labels on entries are forbidden.

4. The decision of the judges in all cases will be final.

5. Entries must be accompanied by the recipe as used, written on a 3"x5" card.

6. The Long Island Beekeepers Club reserves the right to publish the recipes.

7. Entries will be exhibited as received. Plates will not be furnished by the contest committee.

8. Class FOUR items are handcrafted items related to beekeeping that could not be included in any other class. Honey labels and artwork, other than photography, are included in this class.

9. Class FIVE photographs must be related to beekeeping and can be taken with a digital or film camera, but cannot be altered by hand or with image-editing software.

PHOTOGRAPHY

Class Descriptions

P1 Close-up/macro print; Subject must relate to beekeeping.

P2 Scenic, print; Apiary subject such as flowers, hives, etc.

P3 Portrait, print; Person or beekeeping procedure in appropriate setting

P4 Essay, prints; A set of from 4 to 7 pictures depicting a beekeeping story.

Classes with less than 3 entries in each will be judged together. The following apply to all, unless otherwise stated:

1. The photo contest is open to all photographers.

2. Prints must be 5" x 7" inches or larger, mounted on a mounting board that extends at least one inch beyond the print on each side. No frames are permitted. Essay prints may be mounted on one mounting board.

3. Prints may be black & white or colored.

4. Photographs can be entered only once in any LIBC show.

5. Each photograph, including the Essay as a set, may be accompanied by the photo title, in the center of the base of the mount.

6. Brief captions must accompany the Essay photographs. The order of Essay photographs must be indicated clearly.

Judging Criteria

Classes P1 - P4, 100 MAX. POINTS

1. Photo composition 35

2. Treatment of subject matter 35

3. Quality and presentation 30

10. Class SIX items must be related to beekeeping and accompanied by a typed or written explanation detailing practicality and ease of reproduction.

HONEY COOKERY, ARTS, CRAFTS AND GADGETS CLASSES

Class ONE: Baked goods made with at least 50% honey as sweetener, including, but not limited to cookies, brownies, cakes, bread, rolls, muffins, and pies.

Class TWO: Baked goods made with 100% honey as sweetener, including, but not limited to cookies, brownies, cakes, bread, rolls, muffins, and pies.

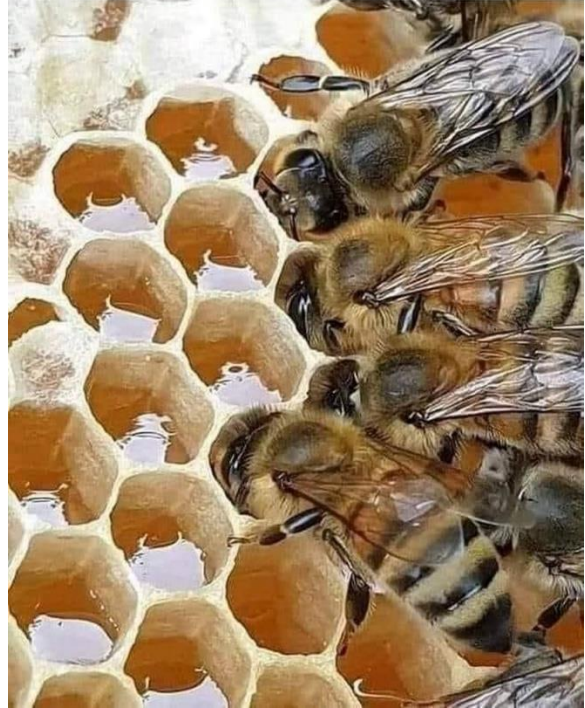
Class THREE: Honey spreads, including jams, jellies, conserves and honey butters, 1 jar

Class FOUR: Arts and Crafts

Class FIVE: Photography

Class SIX: Gadgets

If there is only one item per class only an Honorable Mention Award will be given. First, second and third prize awards will be reserved for multiple entries in the same class. Judges' decision will be final.



Did you know that:

- one spoonful of honey is enough to keep a person alive for 24 hours
- one of the first coins in the world featured a bee symbol
- honey contains live enzymes. The metal spoon kills these enzymes. The best way to consume honey is with a wooden spoon, if not, you can use a plastic one.
- honey contains a substance that helps the brain function.
- honey is one of the few foods on earth that alone can sustain human life.
- bees saved people from starvation in Africa.
- propolis produced by bees is one of nature's most powerful antibiotics.
- honey has no expiration date.
- the bodies of the world's greatest emperors were buried in golden coffins and then covered with honey to prevent them from rotting.
- the term "honeymoon" comes from the fact that the young couple consumed honey for fertility purposes after marriage.
- a bee lives less than 40 days, visits at least 1,000 flowers and produces less than a teaspoon of honey, but for her it is the work of a lifetime.

Thank you, dear bees!

Have a great picture of your beekeeping you want to share? Let us include it in the newsletter (with attribution!) Email pics to Conni!

VISIT THE CLUB WEBSITE AT
WWW.LONGISLANDBEEKEEPERS.ORG

Check your account on the website every month