

The "BEE LINE" LONG ISLAND BEEKEEPERS CLUB, INC.

Keeping Bees on Long Island Since 19



Committees:

Editor: Conni Still, 631-472-1760

Webmaster: Nick Hoefly,

Librarian: Lorraine Leacock

Club Photographer: Phyllis Stein

Hospitality: Laurie Wills & Janet Ingoglia

Designer: Audrey DeLong

Visit the club web site at:

www.LongIslandBeekeepers.Org

- **Outreach Director:** Rick Cannone, 631-445-6266
- **Programs Director:** Moira Alexander, 631-664-6810
- **Immediate Past President/Director:** Steve Chen 646-625-9910

Bee Board

- **President:** John Most, 516-361-3413
- **Vice President:** Walter Scott 516-428-1063
- **Treasurer:** Suzanne Cahill 917-714-3364
- **Secretary:** Marianne Sangesland, 631-680-5895*
- **Membership Secretary:** Conni Still, 631-472-1760
- **Education Director:** Grace Mehl, 631-766-5648

Next Meeting:

Sunday, 26 October, 2025

Sisters of St Joseph

Building 4

1-3 pm!

The Board and membership would like to thank Joan Mahoney, Wally Blohm and Patty Raffloer for their diligent work completing the annual club audit. These details keep our club operating properly. Thank You!

MASTER BEEKEEPERS LIST

Moira Alexander, Smithtown.....	631-664-6810
Peter Bizzoso, Manorville.....	631-874-4750
Rich Blohm, Huntington.....	631-271-7812
Steve Chen*, Holbrook.....	646-625-9910
Carl Flatow, Oceanside.....	516-510-6227
Walter Goldschmidts, Lloyd Harbor.	301-613-0001
Nick Hoefly, Astoria.....	352.875.5642
Chris Kelly, Mattituck.....	631-275-5786
Deborah Klughers, East Hampton...	631-377-1943
Katherine Luberto.....	631-965-7327
Joan Mahoney, N.Babylon.....	631-667-5339
Grace Mehl, Smithtown.....	631-766-5648
Fred Munzer, Dix Hills.....	631-243-3512
Marianne Sangesland, Smithtown....	631-680-5895
Walter Scott, West Hills Huntington..	516-428-1063
Wayne Vitale, Setauket.....	516-680-3020
Laurie Volel-Wilkowski.....	516-643-6011
Neal Wechsler, Lindenhurst.....	631-957-7136

Master Beekeepers are certified beekeepers who have a detailed knowledge of honeybee biology, expertise in the proper practices of beekeeping, and can present this information to the beekeeping and non-beekeeping public in a detailed, accurate, clear and authoritative manner.

Master Beekeepers provide education and assistance to beginning beekeepers and serve in other capacities in the community as experts in beekeeping. The Master Beekeeper program was developed by Dr. Roger A. Morse at Cornell University. The program has been expanded by the Eastern Apicultural Society of North America to other areas.

You can learn more about the Master Beekeeper Program by visiting the Eastern Apicultural Society website: <http://www.easternapiculture.org/master-beekeepers/certification.htm>



Hello Beekeepers

This is our annual Honey Judging Competition. I hope you are all members in good standing. If not, bring your \$40 in cash first thing when you arrive and see me!

All the Rules for the honey judging are on the website.(And linked in the LINKS in this newsletter). One of the board members said at the meeting this week, that last year she saw a member coming to the judging with a pickle jar, half filled with honey that was not clear. She stopped the person and explained that the jar did not meet the qualifications of honey to be judged according to the rules set by most bee organizations. Rather than have it rejected at the desk, in front of other beekeepers, perhaps he would rather just leave it in the car. He did.

I hope that person has learned alot about beekeeping since last year and will bring a beautiful jar of honey to be judged this year. I hope you all will have read the rules, bring a new lid to swap out when you get here, plastic bags to carry your jar to prevent finger prints, little things that take off points. Let us give credit to the marvelous insects that produce this delicious food they rely on and we enjoy and show it off at its best!

Event of the Month
HONEY JUDGING



TEACHING APIARY NEWS

Our next Teaching Apiary session is 10:00 AM 18 October with Master Beekeeper Marianne Sangesland at Secretary@LongIslandBeekeepers.org

Please email the instructors at the addresses below to sign up! Include your *cell phone number* when you email just in case of last minute weather issues causing changes or cancellations.

Attendees must wear a veil and dress appropriately with long pants and long sleeves with closed shoes, as we will be opening hives. There are a few veils available on site for real NEWBEES. The instructors will determine when they have reached a limit for their session in accordance with what they are comfortable with. If there is rain, the instructors will decide whether to cancel or hold it inside. The instructor will notify you if a change in the schedule is necessary as long as you have provided a cell phone number.

The Teaching Apiary is at the Sisters of St. Joseph's Honey House, 1725 Brentwood Rd, Brentwood. The main entrance is across from 5th Ave. Follow the yellow "Bee Meeting" signs to the Honey House and meet the instructor there.

Directions: The LIBC Teaching Apiary is located on the grounds of the Sisters of St. Joseph's Campus at 1725 Brentwood Rd, Brentwood, NY. Enter the Sisters of St Joseph's complex at the 1725 Brentwood Rd, Brentwood, NY entrance (across from 5th Ave. on Brentwood Rd.) and pass the guard shack going straight, then turn right at Maria Regina Rehab

Center and then go right again at the traffic circle and take the first right out of the traffic circle toward the parking area and go to the end of the parking lot, then right at the rain garden toward the Honey House and park on the left side of the road where you will see other cars parked. Walk to the Honey House where the group will gather to meet your instructor. The Teaching Apiary hives are to the left of the Honey House.

October Schedule:

10:00 Saturday, October 18th - Master Beekeeper Marianne Sangesland at Secretary@LongIslandBeekeepers.org

LIBRARY REPORT:

Thanks to Annie McClintock has kindly stepped up to assist with the Library!

SEPTEMBER ACTIVITY

11 books signed out by 7 members (a record?)

4 books returned by 4 members

These folks have overextended their loans and we have tried to reach them without success:
ANGELA ASSELTA - *Beekeeping for Dummies*
JUDY KOSLOFSKY - *100 Plants to Feed the Bees AND Beekeeping for Beginners*
BOB LINEKIN - *The Backyard Beekeeper AND The Beekeeper's Bible*
CIENNA RIZZA - *The Beekeeper's Handbook*
MARGIE RIZZA - *Homegrown Honey Bees*
MICHELLE SALZ - *Natural Beekeeping AND Simple Smart Beekeeping*

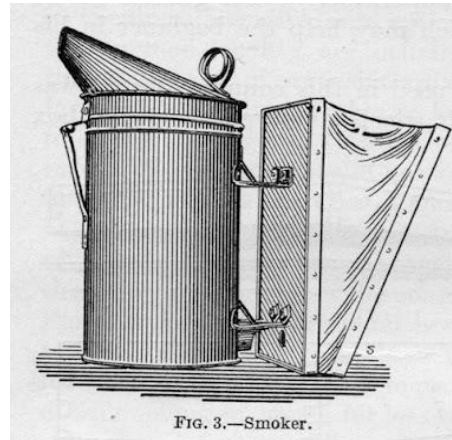
If anyone is in contact with them, the returns would be very much appreciated. The librarian may be reached by email: librarian@longislandbeekeepers.org



Club News:

- October is Honey Judging contest. You can review the rules and categories on the website.

- October will be the smoker lighting contest as well. Smoker competition this month will take place during the judging of the honey. Please place your smoker and supplies on the grass outside the meeting place, and the competition will be held outdoors.



[This Photo](#) by Unknown Author is licensed under [CC BY-NC](#)

Club Updates:

Raffle Prizes of two complete hives in October and November. Tickets will be \$10 for one hive.

Oxalic Dribble may be purchased for a nominal fee at the November meeting. Contact Grace Mehl with your name, cell phone number and the number of hives to be treated.

Holiday Party News!

Save the date! 7 December 2025

Smithtown Elks Club: Blueblinds Mansion

120 Edgewood Avenue

Smithtown, NY 11787

1-5 pm.

\$35 per member and \$35 per spouse (partner)

Money, cash or check, must be paid by

11/23/25. Contact Pat Wiggins, 631-553-0010 42 Stillwell Street, Huntington

Menu (selected by our wonderful committee):

Open Cash Bar and Cold Station

Penne Florentine

Chicken Francaise

Asian Meatballs

Steak and Mushrooms

Eggplant Rolls

Potato and Brussels Sprouts

Salad

Cake, Coffee and Sodas

October already! Bees are snooping everywhere for something sweet to collect, with little luck. If I put my hive tool down on the deck railing, within a minute, a bee is there checking it out. We are definitely in a dearth. Consider this when working your bees and be careful not to start robbing by exposing honey, syrup or just the open hive for any longer than necessary. Working hives early in the morning or late in the afternoon often works for me, as less bees are flying to come snooping around. Make sure the entrances are closed down to the smallest size or put robbing screens on smaller, at-risk hives.

These early fall days are critical for your bees survival over the winter. Don't let your guard down now. Pest control is key to overwintering success. Varroa mites are still increasing in population even as the queen bee slows down her laying and contracts the brood nest. Less bees means higher infestation rate even if the mites weren't increasing in population! So, it is really important to make sure your mite load stays controlled through Fall. Treatment options are increased since your honey supers are probably off and stored away. Formic Pro is still an option while day time temperatures are above 50 F. Oxalic Acid is also an option, if you know your mite level is already low and you want to keep it there. The extended release products, such as Varroxxan, out now give you more options to use it as well. HopGuard is another alternative treatment for mites if you have used the same treatment time after time. It

works by contact, so the temperature is not as critical. Api-Lif-Var and Api-Guard, the two Thymol based treatments are also an option now for a little while, until it gets too cool, with the honey off. Apivar, the amitraz based chemical treatment is also an option, although there is the possibility of residue in the wax, and also, mites are showing some resistance to amitraz. But, the Tau-Fluvalinate in the Apistan strips is not recommended at all as there has been resistance to this for quite a while and it stays in the wax. There is a new treatment on the market now, called Norroa which uses a new Mode of Action (MoA) based on RNAi, although it is not yet available in New York. I would like some time and results from other beekeepers before I make any recommendations on its use. Waiting a year or two after a new product comes out makes sense to me. Let someone else test it on their bees first! Worth watching though.

The other pest that is a big threat now is Small Hive Beetles. They can get in the tiniest of openings and if the hive is not strong enough to corral them or run them ragged, they can take over and slime the combs and drive bees to abscond from their own hive. Several members have had serious problems with SHBs the past two years. Traps, baited or not, Swiffer sheets in the the upper corners under the inner cover, DE (diatomaceous earth) around the hives to kill larvae crawling out to pupate, beneficial nematodes and strategic use of hive tools and fingers to crush them are all helpful. A strong hive and a small entrance (they can go through screens and through screened bottom boards) are the best defense. Make sure the bees can cover all the space in the hive! Don't leave extra space!

Of course there is the wax moth as well. But, the wax moth is more of a problem for stored combs. Make sure you protect your stored combs, especially those that are darker, where brood has been. Paramoth can be used on a tight stack of boxes, applied to up to 5 boxes. Then start a new stack by putting a piece of plywood or an outer cover or such and you can stack 5 more and apply to the top of each stack. Read

the directions on the container, please.

After varroa mites, the next biggest killer of hives over the winter is starvation. I like to leave a full box of honey on the top of all of my hives, with some additional honey in the box below, totaling at least 50 lbs. A medium frame of honey is 3-4 lbs of honey (really fat ones might be more, but they are unusual unless you have less than the full complement of frames in a box). I count them all as 3 lbs. From that, I calculate (very roughly) what honey is in a hive. You can also weigh your hives by getting a scale for luggage or such, and lifting the back (or front) of a hive gently with a hook and then doubling the weight for the total weight. Every hive configuration is a little different. So, you will have to do this with a few hives to determine what YOUR goal weight is for wintering your hives.

If your hives don't have about 50 lbs of honey for a nice size colony to make it through winter, then you should be feeding them. Feeding should be 2 sugar: 1 water at this time of year. You must feed them enough that they take it down and store it, which means a lot, and continuously. Then they will store it in the combs where they can best access it over winter. I like to give a gallon at a time and replace it before it runs out. The size of the colony and how much they need determines the total to feed. Watch for robbing. If they aren't making headway on storing the syrup, check that robbers aren't just taking the syrup! Before you feed, you must have finished condensing the hive down to the configuration you intend to winter in. Feeding before you do this makes it more complicated to condense the hive.

The last thing I would like to address is queenless colonies. If you discover a queenless colony at this late point in the season, you should not wait for them to requeen themselves. This is a critical time for the colony to produce winter bees. A 30 day interruption in egg laying would be a big hit that few colonies could survive. There are way less drones available to get a queen well mated in October,

and it is also hard to find a queen to buy for replacement. Combining queenless colonies with a queen-right colony is usually the best way to go at this time of year. Then, in the Spring, you may be able to split this colony. At that time, you can more easily buy a queen or even allow the bees to make their own *if it is a really strong split*.

Beekeepers have to be thinking at least a season ahead of the calendar, maybe two. I know I am already planning Spring, although I am working on Winter preps. And, the leaves are just starting to fall!

NEWS:

Please read this whole message! There is SO MUCH INFO in this message!

Our upcoming meeting is Sunday, October 26th, at building 4 of the Sisters of St. Joseph, 1725 Brentwood Rd, Brentwood NY. **Follow the yellow bee meeting signs!** The doors will open at 12:30. The meeting will start at 1:00. ***Please do not park on the grass!***

If you are bringing honey, crafts or anything else for the ***Honey judging and other competitions***, please arrive no later than 12:45 so your entries can be checked in. You may enter one item in each category. **The rules and categories are listed below in this email and also available on our website.**

The **Smoker Lighting** contest will also be held at the October meeting. Bring your smoker, lighter, and fuel to participate! Leave your smoker on the circle outside the meeting please. The the plaque for the winner is pictured at the end of this email!

- There will be a sign-up list for the **Hive Alive Fondant** order at the meeting. ***Hive Alive Fondant is not the same as bakery fondant! Bakery fondant is not advisable to be used to feed bees. Making your own is of course possible, but lots of work!***

The Hive Alive fondant order is a one time per year event. If you aren't able to attend the meeting, please email John Most at President@longislandbeekeepers.org to order

your fondant. There are 15 patties (each a kilo) in a box. You can store it for 2 years or share it with a beekeeping buddy. We have pre-sold a pallet of boxes, which is 60 boxes. We are working on selling another 1/2 pallet, which is the **smallest increment** they will allow to be ordered. We have a list of about 10 boxes, and need to sell another 20 boxes to be able to order the additional 1/2 pallet. **If we don't get the whole half pallet of 30 boxes, those people who ordered later after the first pallet was sold will not be able to get fondant.** So, if you are on the fence, please order soon! Deadline is October 31st. We are able to offer the same price as last year, which would be \$75 a box. Each fondant pattie is \$5. You can order **individual patties**. This is a pre-order only. *We*, the LIBC, can't store the fondant. You must order to get this price *and be available to pick it up on the distribution day*, or ask someone else to pick up for you.

- Dolores Osterle has taken over as administrator of the club **facebook** page of **Long Island Beekeepers Club**, and is doing a great job so far! Please check it out.

- There will be a sign up for **Oxalic Acid dribble solution** at the meeting. This is for the last Varroa mite treatment to be done once the bees are broodless. It will be delivered at the November meeting. The cost will be nominal, basically covering the cost of the jars. If you have a jar from last year that you don't need, please donate it at this meeting. If not attending, text Grace at 631-766-5648 with number of hives and whether you need a syringe for application or not, so she can pre make all the jars and order syringes.

- **Club Honey!** There is a little bit of club honey available still. Most is sold. Price is still \$12 a pound.

- Items for the Sisters of St. Joseph **food pantry** (non-perishable items) will be collected.

- Our hospitality volunteers (Laurie and Janet) can always use help setting up the table and coffee, and of course, donations of cake, cookies and snacks are always welcome!

- The **Holiday Party** is booked for December 7th. Please put it on your calendar! The sign up list will be going around at the meeting. The price is \$35 per person. The club is picking up a little over half of the cost, so this event is limited

to member and partner. It will be held at the Blueblinds Mansion (Elks Club) at 120 Edgewood Ave. Smithtown. The time is from 1:00 to 5:00. Patti Wiggins will be accepting checks or cash at the meeting. You can call her to reserve a spot, and then mail a check to her made out to: **Long Island Beekeepers Club**. Her number is 631-553-0010. Her address is 42 Stillwell St. Huntington, NY. All payments are due by 11/23.

- The **Bee classes** for 2026 have been scheduled! The Beginner Class is January 10th and the 2nd year and beyond class is March 14th. There will be more information on the website. Sign up by texting Grace at 631-766-5648 or on the website. Must be a member to attend.

- **Raffles!** This month we have some fantastic raffle prizes. There will be two complete hives with 3 boxes each with foundation frames, bottom board, inner cover, outer cover, queen excluder and hive top feeder. One is an 8 frame set up and the other is 10 frame. The tickets will be \$10 each, or 3 tickets for \$25, cash or check please.

- **Bee Tree Order!** We put a deposit on an order of bee trees for **Spring delivery**. There will be 6 trees in a bundle and the cost to member will be \$30 for all six. We have ordered 50 of each tree. To order additional at these prices, we have to order in increments of 25 per tree type. We will have a sign up list at the meeting. Contact Moira to sign up if not at meeting. Her email to sign up is ramoi@aol.com.

The trees are:

- Crab Apple Rose Low (18-24 inches)
- Japanese Lilac Tree (36-48 inches)
- Pussy Willow (24-36 inches)
- Redbud Tree (4 to 5 foot)
- Shining Sumac (24-36 inches)
- Little Leaf Linden (36-48 inches)

- This month the nominations open for the following positions:

- President
- Web Master
- Education
- Outreach

Speakers for October:

Joan Mahoney will update us on the Queen Selection conference

Grace will be talking about "What's Happening in the Hive"

Rich Blohm will be speaking about his experience at Apimondia

Upcoming events:

- Zac Llamas will be the speaker for November.

- Nick Hoefly will be speaking on "What's Happening in the Hive" in November also!

We are proud to show off the club's winners of this year's Honey Tasting!



Figure 1 John Holden: Medium Honey!



Figure 2 Moira Alexander: Dark Honey!



Figure 3 Chris Thomas: Light Honey!

Planning for Next Year

Meeting Dates:

1/25/26

2/22/26

3/22/26

4/26/26

5/24/26

6/28/26

July Picnic

8/23/26

9/27/26

10/25/26

11/22/26

Christmas Party

LINKS

[Honey, Wax, and Mead Judging Entry Rules – Long Island Beekeepers Club](#)

[Charles Mraz Apitherapy Course & Conference \(CMACC\): One Health & Honeybees](#)

[Inmates find healing in nature through new beekeeping program, producing honey!](#)

VISIT THE CLUB WEBSITE AT

WWW.LONGISLANDBEEKEEPERS.ORG

Check your account on the website every month